

Software Installation - Quick Start Guide

PC Hardware requirements

Thank you for purchasing and using a GTrek device. In order to use the GTrek software your PC should comply with the minimum hardware description below.

PC Requirements	
Minimum Requirements	Recommended Requirements
Windows 2000 or XP Pentium 3, 1Ghz 256MB RAM 100MB Disk space	Windows XP or Vista Pentium 4, 2.4Ghz or AMD 2400xp+ 512MB RAM (1024MB RAM for Vista) 500MB Disk space
3D Compatible video card 800x600, 16 bit colour display	Internet access, DSL 512MB (For Google Earth only) 3D Compatible video card, Direct X v9.C 1024x768 24 bit colour display

Your Ski-Log kit contains the following:-

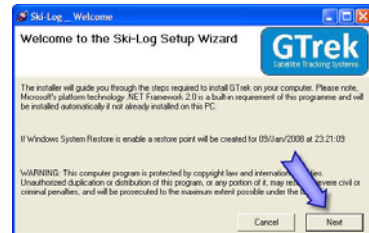
- | | | | |
|---|-----------------------------|---|------------------------------|
| 1 | GTrek GPS data logger | 2 | USB to mini-USB cable |
| 3 | AC power adapter | 4 | DC cigarette lighter adapter |
| 5 | Li-ion rechargeable battery | 6 | Installation CD |
| 7 | Quick Start guide | | |

Install software prior to connecting your GTrek

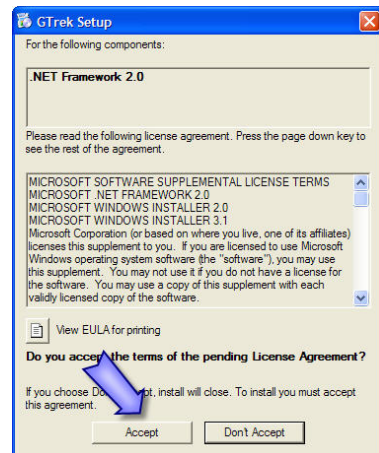
Prior to connecting your GTrek to your PC you are required to install the application software and device drivers.

The installation is a simple automated process and should proceed as follows:

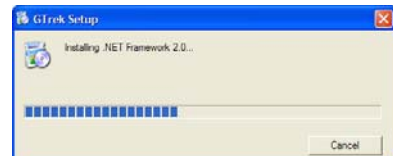
1. After inserting the installation disk into your CD-ROM drive the installation program should run automatically. If not, open "My Computer" and double click startUp.exe on the installation CD.
2. Ski-Log requires a Microsoft system extension called ".Net Framework 2.0" and needs to be installed and may take a couple of minutes to complete. Click **Accept** and the installation will proceed. ".Net" may already be installed, if so this step will be skipped.
3. Installing .NET 2.0 as required
4. The Welcome Screen is now displayed. Click **Next** to continue.
5. The Ski-Log **End User License Agreement** is displayed next and the user needs to click **I Agree** and **Next** to continue.



Step 1



Step 2



Step 3



Step 4



Step 5

6. Ski-Log is normally installed in the default folder. It can be changed if necessary, although the default folder is recommended. Microsoft Windows XP and Vista provide support for more than one user; this program can be installed for a single user (default) or can be accessed by all users. This selection can also be made here. Click **Next** to continue.

7. Confirm Installation. Click **Next** to continue.

8. If the Windows Logo Testing message is displayed click **Continue Anyway**. This is a Windows security message and is not always automatically displayed. It is not always displayed above all other items currently being displayed and hence the installation process may appear to hang. At no time during the installation process should there be any length of time where no update process is being displayed.

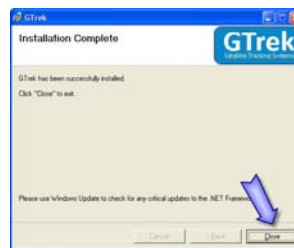
9. Ski-Log will now commence the installation. When the installation has finished click **Close** to complete the task. That concludes the installation and the CD can be removed.



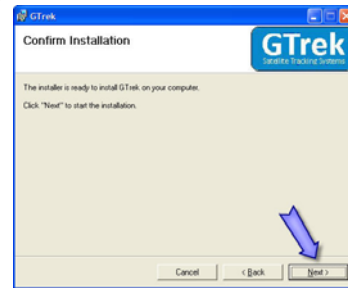
Step 6



Step 8



Step 9



Step 7

10. Insert the battery into Your Ski-Log aligning the battery terminals with the contacts, replace the cover and connect your Ski-Log to the PC with the mini USB cable supplied. A message will be displayed stating that New Hardware has been detected and the Hardware Wizard will be launched. The driver installation is a two stage process as follows:

11. A Dialog box will be displayed requesting directions to install the new hardware, click **Yes, this time only** and **Next** and **Next** again.

12. The installation process will start by searching for the information required. When found the drivers will be installed. Click **Finish** to complete the process.



Step 11 & 13



Step 11 & 13



Step 12 & 14

13. At this stage a second Hardware Wizard Dialog Box may be displayed requesting directions to install the new hardware. Click **Yes, this time only** and **Next** and **Next** again.

14. The installation process will start to search for the information required. When found the drivers will be installed. Click **Finish** to complete the process.

15. An information balloon will be displayed indicating that the process has completed without errors.



It is recommended that prior to first use your Ski-Log be configured and initialised. Switch on your Ski-Log and allow it to synchronise with the satellites. Launch the Ski-Log application by double clicking the icon. From the Settings menu select Configure Ski-Log and click **Save**. Your Ski-Log will be configured for use and the on-board memory will be cleared.



The battery should be fully charged before use. The green flashing light indicates the charging process is complete. Your Ski-Log is now ready to go. Use your Ski-Log and get familiar with it before you get to the slopes.

For more information on installation and usage please refer to the Ski-Log manual on the installation CD.